



*Sportswear Catalogue*

<b>RUGBY</b>	<b>1 - 4</b>
<b>FOOTBALL</b>	<b>5 - 8</b>
<b>BASKETBALL</b>	<b>9 - 10</b>
<b>TRIATHLON</b>	<b>11 - 14</b>
<b>P.E. / TRAINING</b>	<b>15 - 16</b>
<b>HOCKEY</b>	<b>17 - 18</b>
<b>NETBALL</b>	<b>19 - 20</b>
<b>CRICKET</b>	<b>21 - 22</b>
<b>ATHLETICS</b>	<b>23 - 24</b>
<b>CYCLING</b>	<b>25 - 28</b>
<b>TOUCH</b>	<b>29 - 30</b>
<b>ROWING</b>	<b>31 - 32</b>
<b>SWIMMING</b>	<b>33 - 34</b>
<b>SURF LIFESAVING</b>	<b>35 - 36</b>
<b>BRANDING</b>	<b>37 - 38</b>
<b>COLLARS/SPECIFICATIONS</b>	<b>39 - 40</b>



# RUGBY





ORDER CODE  
JP137

**FEATURES**

1. Logo and crest, sublimation or embroidery.
2. Fully sublimated playing jersey including numbers.
3. Collar options see page 40 for details.
4. Fitted and standard fit styles available.



ORDER CODE  
JP1372

**FEATURES**

1. Cut and sew panel jerseys.
2. Plain stock main body fabric colours.
3. Collar options available page 40.
4. Sublimated panels in carbon fabric.



ORDER CODE  
JP376ALT

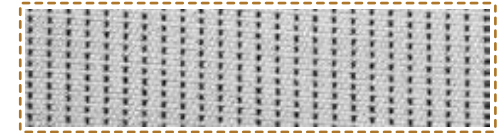
**FEATURES**

1. Fully sublimated cut and sew panel jerseys.
2. Side panel fabric or sublimated carbon fabric.
3. Collar options page 40.
4. All stitching detail optional see page 3.



ORDER CODE  
JP224

**CARBON INFUSED POLYESTER FABRIC**



TRAINING SMOCKS



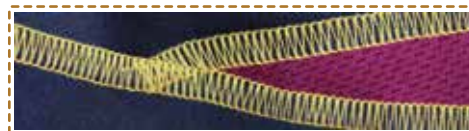
ORDER CODE  
JP376SM

**EXAMPLE FABRIC**



ORDER CODE  
JP337OR

**FLAT LOCK STITCHING DETAIL**



ORDER CODE  
JP0260

**3D SPREADER STITCHING - CARBON INSET**





**ORDER CODE**  
JP376RS

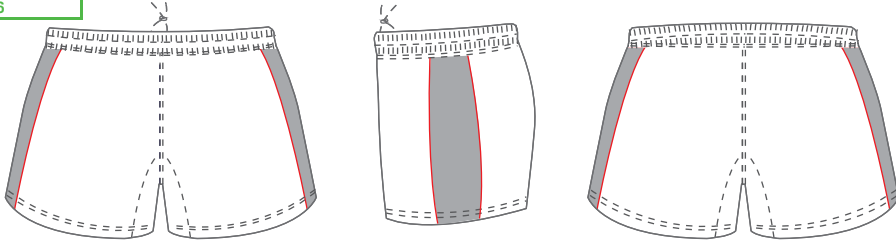


**FEATURES**

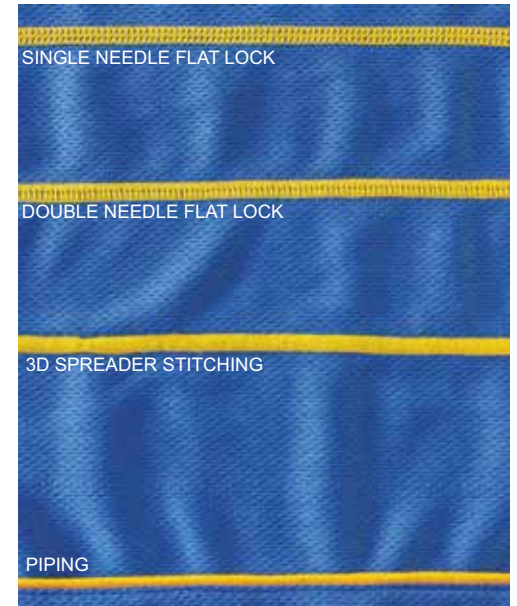
We have 4 standard rugby short styles, each can be made with different fabric options or mix two different fabrics into one short.

1. Main fabric 100% polyester or poly / cotton twill.
2. Panels can be polyester mesh or heavy duty lycra.
3. All shorts have durable draw cords in the waist band.
4. Shorts can be full sublimation or cut and sew from stock colours.

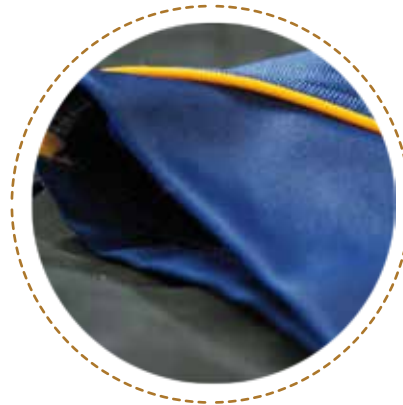
**ORDER CODE**  
JP276



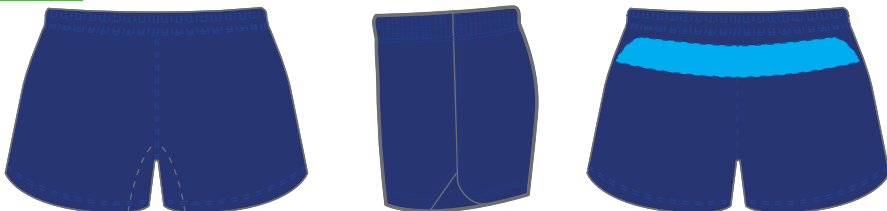
**STITCHING VARIATIONS**



**ORDER CODE**  
JP376SP



**ORDER CODE**  
JP444C











**DETAILING**

All football shirts have tailored bottom hems with lycra binding and side panels with flatlock or 3D spreader contrast detail stitching.

**FEATURES**

1. All football uniforms are full sublimation with cut & sew panels.
2. Logos are embroidered or sublimated on all garments.
3. We can also do piping trim between panels.



ORDER CODE  
JP365HMT



ORDER CODE  
JP365BAL



ORDER CODE  
JP365WEZ



ORDER CODE  
JP238



ORDER CODE  
JP371



ORDER CODE  
JP419A



ORDER CODE  
JP423



ORDER CODE  
JP4232

**PERFORMANCE SHORT SLEEVE FOOTBALL TOP**

The AeroMax Technical Performance Football Top is designed to maximize your workout by keeping you dry and comfortable. Made from our exclusive lightweight microfibre polyester Tech fabric, the Performance Football Top offers the fit and feel you demand from performance Teamwear.



## FOOTBALL - GOALIE SWEATER

### OPTIONS

All styles can be in goalie versions, long sleeves and padding.



ORDER CODE  
JP232



ORDER CODE  
JP2322



ORDER CODE  
JP232Y



ORDER CODE  
JP232X

### PERFORMANCE LONG-SLEEVE GOALIE TOP

The AeroMax Technical Performance Football Top is designed to maximize your performance by keeping you dry and comfortable. Made from our exclusive lightweight microfiber polyester Tech fabric, the Performance Football Top offers the fit and feel you demand from performance teamwear.

## SHIRTS



ORDER CODE  
JP423X



ORDER CODE  
JP423Y



ORDER CODE  
JP423W



ORDER CODE  
JP423V

### INTERLOCK POLYESTER

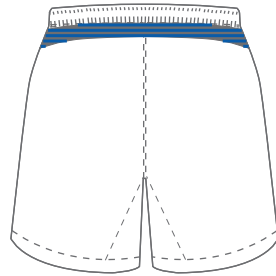
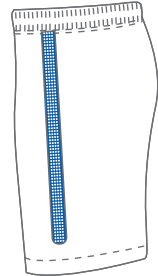


### EYELET POLYESTER



### MICRO-MESH POLYESTER





ORDER CODE  
JP365SHO



ORDER CODE  
JP385

**INFORMATION**

Our football shorts can be fully sublimated or produced

**FEATURES**

Made from our exclusive performance polyester fabric.  
Fully sublimated with your team logos and design.  
Unlimited colours logos and sponsor information at no extra charge.  
Available in men's, women's and youth sizing.



ORDER CODE  
JP419B



ORDER CODE  
JP371SHO



# BASKETBALL





ORDER CODE  
JP233SG



ORDER CODE  
JP265



ORDER CODE  
JP131



ORDER CODE  
JP351

**EXAMPLE SUBLIMATION**



**EXAMPLE NUMBERING**



**EXAMPLE COLLAR DETAILING**



**FEATURES**

1. All playing uniforms fully sublimated.
2. Light weight polyester mesh construction.
3. Two sizing blocks - premier and standard.
4. Collar options offered on page 40.
5. Ladies and men's styles.
6. Design assistance available on request.

**INFORMATION**

Basketball tops and shorts made to order in team colours with logos and numbers included.

Fully sublimated light-weight uniforms manufactured for kids, men and ladies.

We have two patterns; premier and standard fits.

**SHORTS**



ORDER CODE  
JP233SHO



ORDER CODE  
JP265SHO



ORDER CODE  
JP131SHO



ORDER CODE  
JP351SHO

**INFORMATION**

We can add water-mark logos or branding to suit with excellent graphic detail in all printed uniforms.

We have 3 fabrics to choose from all being performance polyester with different face finishes.

Shorts have waist draw cords available in men's and ladies cuts.



# TRIATHLON





ORDER CODE  
JP412CHB



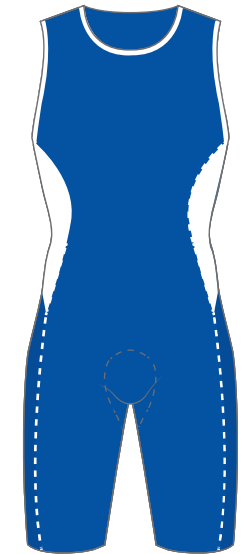
ORDER CODE  
JP128



ORDER CODE  
JP41Z



ORDER CODE  
JP412SKC



**FEATURES**

1. Cut and sew panel suits.
2. Front or back option zip openings.
3. Stock solid dyed materials complemented with sublimation panels.
4. 3D spreader stitching detail and flatlock contrast hems.

Our technical aero-max fabrics use nano engineering to embed the fibre to naturally conduct heat away from the body, keeping the user cool.

The cross-section fabric construction enhances moisture wicking properties.

This highly breathable fabric also contains carbons that are anti-bacterial.

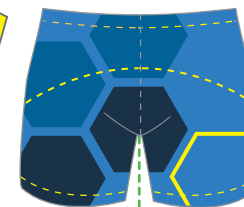


**CROP TOP, SINGLET & SPANKYS**



ORDER CODE  
JP196GTZ

ORDER CODE  
JP196SP



ORDER CODE  
JP279Z



ORDER CODE  
JP0032A

**FEATURES**

1. Standard colour fabrics complemented with contrast stitching detail.
2. Use one of our styles or we can reproduce your current style.
3. All performance fabrics are Korean manufactured.
4. All branding printed to avoid drag.

## TRIATHLON - SINGLET VEST

The ultimate in high-performance! Our Tri sports uniforms are sleek in design and have superior moisture management.

### FEATURES

1. Front hidden zippers
2. Higher front neckline to reduce drag
3. Flat lock seams for increased comfort
4. Two Elastic back pockets, slanted for easy access

### PERFORMANCE AT IT'S BEST

Fabric: Aero Max flat cell-mesh: Stretch cell-mesh creates a cool environment between skin and fabric.

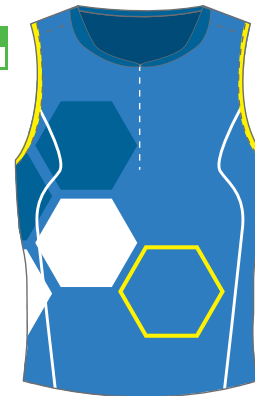
Aero-max fabric features unique construction designed to reduce surface friction and improve performance.

The nylon spandex blend allows for powerful stretch and recovery, while resisting penetration and drag in the water.

ORDER CODE  
JP0039



ORDER CODE  
JP0030



ORDER CODE  
JP0032



## SUITS & RUNNING SPANKY

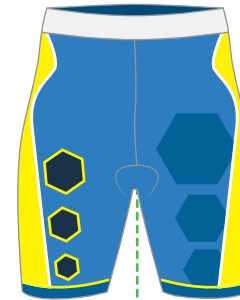
ORDER CODE  
JP128Z



ORDER CODE  
JP128Y



ORDER CODE  
JP0031



ORDER CODE  
JP0033



### FEATURES

1. Engineered fuel pockets with hydrodynamic construction for low drag in water.
2. Zone construction featuring mesh panel inserts for airflow and breathability.
3. Flat seams for increased comfort and low profile fit.
4. Front zip for extra ventilation to beat the heat.

### FEATURES

1. Leg gripper silicon elastic bands
  2. Flatlock & 3D spreader stitching detail.
  3. Perforated forward panel for ventilation
  4. High-end EURO-Formula EF European chamois
  5. Anatomical contoured 4-way stretch construction
  6. Antimicrobial top surface layer, soft brushed finish
  7. Designed for race day yet durable to use for training
  8. Two layers open cell foam;
- One layer closed cell foam for long distance riding protection

ORDER CODE  
JP0034





TRIATHLON - CHAMOIS



WOMENS



MENS







PAGE 15

# P.E./TRAINING



## SPORTS POLOS



ORDER CODE  
JP124SA

LADIES FIT

STANDARD FIT  
ORDER CODE  
JP408

ORDER CODE  
JP124

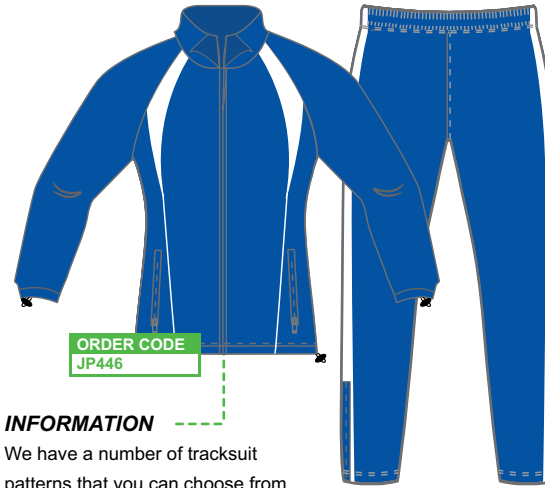
SPORTS FIT

### INFORMATION

We can offer ladies sports polo shirts in stock solid dyed fabrics or in sublimation with cut and sew panel options. Knitted collars and cuffs are also available upon request.

We have two styles in men's polo shirts, Sport fit being more fitted and tailored to suit, and our standard cut being suitable for all body shapes. Both options can be manufactured to suit in full sublimation or a mix of solid dyed with contrast sublimation panels.

## P.E./TRAINING - TRACKSUITS



ORDER CODE  
JP446

### INFORMATION

We have a number of tracksuit patterns that you can choose from. We have approximately 55 stock colours in Micro-fibre polyester with stretch. The fabric has an amazing 1000PSI water resistant, soft touch process for more flexibility and freedom of movement. We can also offer fully sublimated tracksuits in your required design and colour.

ORDER CODE  
JP346



### FEATURES

1. Two lining options, Eyelet or single jerseys
2. Full knee zippers.
3. Zip pockets on pants and jackets.
4. Detachable hoods if required.
5. Waist bungy and toggles.

## JACKET & TIGHTS

Ladies training gear is manufactured from Polyester Nylon or polyester spandex, tailored to fit the body.



ORDER CODE  
JP122

### FEATURES

1. Reflective trim.
2. Body mapped side panels.
3. Colour coded flat lock stitching or 3D spreader stitching.
4. Carbon panels complimenting the solid dyed body fabric.
5. Full sublimation available.

ORDER CODE  
JP121

## JACKET & SMOCK



ORDER CODE  
JP0042

### FEATURES

1. Lined or unlined.
2. Water resistant fabric.
3. Spandex cuffs and collar for comfort.
4. Adjustable waist bungy and toggle.
5. Around 55 colour options to choose from.

ORDER CODE  
JP337

## SHIRT & SINGLET



ORDER CODE  
JP061

### INFORMATION

Sports training T-Shirts and singlets are totally custom made and fully sublimated to your colours and design. Cut and sew panel options available. Three outstanding fabric options to select from or mix and match using two different fabrics in the one garment to get that unique look and feel.

ORDER CODE  
JP141

PAGE 17

# HOCKEY





**DRESS**



ORDER CODE  
JP361



ORDER CODE  
JP365HK



ORDER CODE  
JP371HK



ORDER CODE  
JP442

EXAMPLE FABRIC WITH EXAMPLE STITCH



EXAMPLE FABRIC WITH EXAMPLE STITCH

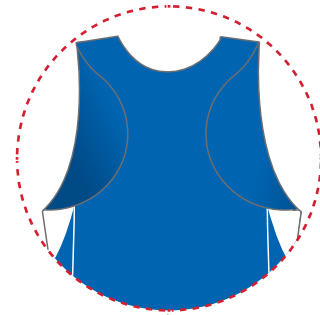


**FEATURES**

1. Fully sublimated cut and sew panel jerseys.
2. Side panels panel fabric or sublimated carbon fabric.
3. Collar options page 40.
4. All stitching detail optional see page 3.

**SKIRT WITH SPANKY**

**SKIRT**



**FEATURES**

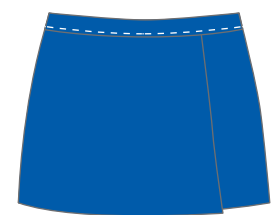
1. Standard back or cut away razor back.
2. Full sublimation or cut and sew panels.
3. Side piping trim or flatlock detail.
4. Two cuts, A-Line or Elite fit.



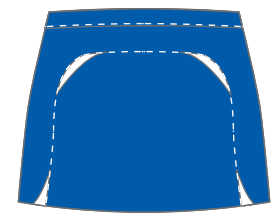
ORDER CODE  
JP164

**FEATURES**

1. A-line with internal spankie.
2. A-line standard skirt.
3. Full sublimation or cut and sew panel construction.



ORDER CODE  
JP382SKI



# NETBALL



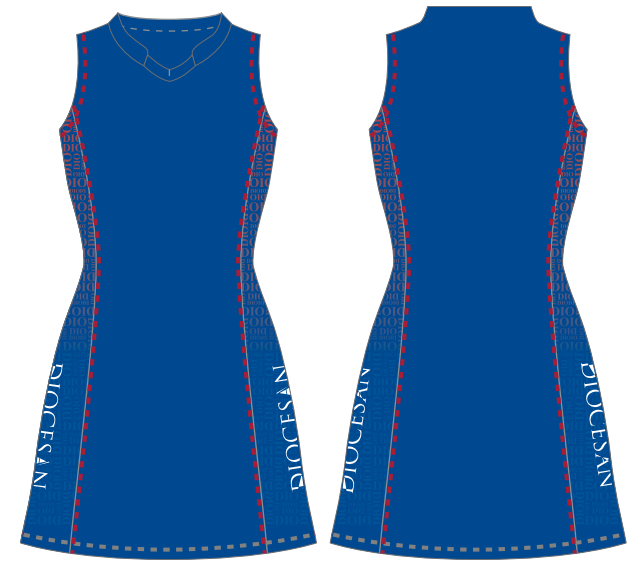


ORDER CODE  
JP081  
A-LINE

**FEATURES**

1. Two cuts, A-Line or Elite fit.
2. Side piping trim or flatlock detail.
3. Standard neckline or low neckline.
4. Standard back or cut away Razor back.
5. Full sublimation or cut and sew panels construction.

ORDER CODE  
JP440  
ELITE



JACKET & SPANKY

TOP & SKIRT



ORDER CODE  
JP332

**FEATURES**

1. Full sublimation or cut and sew panel construction.
2. Polyester Lycra or Nylon Lycra fabric.
3. Leg gripper silicon elastic bands.
4. Body mapped side panels.

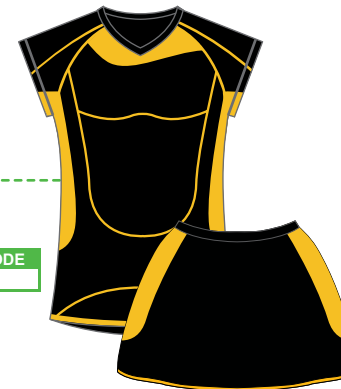
**FEATURES**

1. Side panels are fabric or sublimated carbon fabric.
2. Fully sublimated cut and sew panel tops.
3. All stitching detail optional see page 3.
4. Collar options page 40.

ORDER CODE  
JP315

**INFORMATION**

A new premier fit has been developed after extensive consultation with premier teams and using local pattern technologies. We have also launched another new netball fabric that is market leading technology.



ORDER CODE  
JP303

ORDER CODE  
JP303SKI

**FEATURES**

1. A-line standard skirt.
2. A-line with internal spankie.
3. Full sublimation or cut and sew panel construction.



ORDER CODE  
JP44A

ORDER CODE  
JP44ASKI





PAGE 21

# CRICKET



ORDER CODE  
JP372



ORDER CODE  
JP107



ORDER CODE  
JP416B



ORDER CODE  
JP416B2

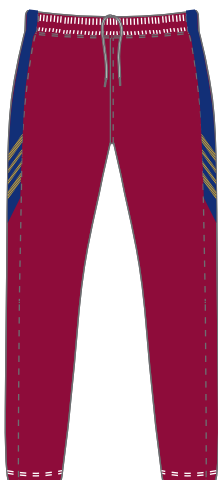
**FEATURES**

1. Full sublimation process on one fabric.
2. Full sublimation with contrast cut and sew panels.
3. Feature stitching details or contrast piping.
4. Sublimation colours to match your PMS colours.
5. Branding with print or embroidery.

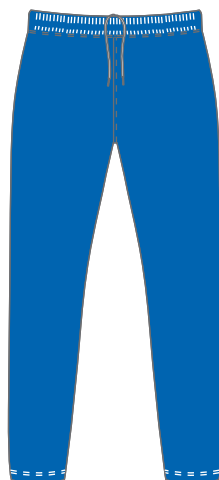
**CUSTOMIZATION**

Endless possibilities available. Interlock, mesh and eyelet fabrics.  
There are two different weights of fabric to choose from depending of your summer climate requirements.

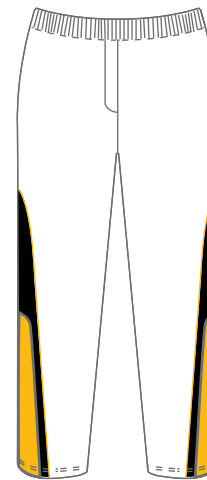
TROUSERS



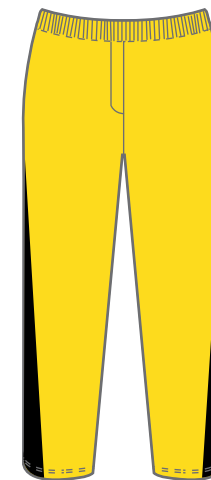
ORDER CODE  
JP107P



ORDER CODE  
JP372P



ORDER CODE  
JP107SP



ORDER CODE  
JP107CR

**DESIGN**

Cricket Pants are made from medium weight polyester. It is complimented with spandex to allow free movement stretch to the traditional hard wearing polyester material, which means they are perfect for sliding in the outfield. Like the shirts, they can be made in traditional white or sublimated to the customers' requirements. These are offered fully sublimated or with breathable mesh panels sewn in complimented with flat Lock or 3D stitching detail. We can supply cricket pants to you without the legs being hemmed so that your players can adjust them to best suit their own requirements. We can manufacture cricket tops and pants produced from our patterns and incorporate your design and logos.



# ATHLETICS



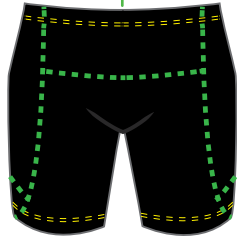
## ATHLETICS - TIGHTS & SPANKY

ORDER CODE  
JP121Z



### FEATURES

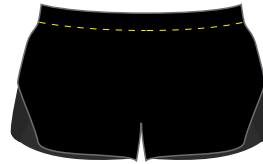
1. Reflective trim.
2. Body mapped side panels.
3. Polyester Lycra or Nylon Lycra fabric.
4. Full sublimation or cut and sew panel construction.
5. Colour coded flat lock stitching or 3D spreader stitching.
6. Carbon panels complimenting the solid dyed body fabric.



ORDER CODE  
JP280

## ATHLETICS - RUNNING SHORT

ORDER CODE  
JP277



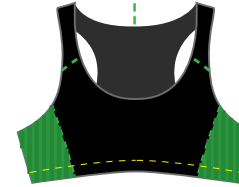
### FEATURES

1. Fully lined.
2. Mesh panels.
3. Light weight fabric, polyester micro-fibre (stretch).
4. Wide over-lap side opening for freedom of leg movement.

## ATHLETICS - CROP TOP

### FEATURES

1. Flat lock and 3D spreader stitching detail.
2. Polyester spandex main body.
3. Double lining front panels.
4. Elasticated body cuff.



ORDER CODE  
JP278



ORDER CODE  
JP196CT

## SINGLETs

ORDER CODE  
JP380Y



ORDER CODE  
JP380Z



ORDER CODE  
JP276



ORDER CODE  
JP380



### FEATURES

1. Standard back and razor back styles.
2. Flatlock stitching in contrast colours.
3. Panels designed to allow more freedom of movement.
4. Cut and sew sublimated panels in contrast fabrics to main body.

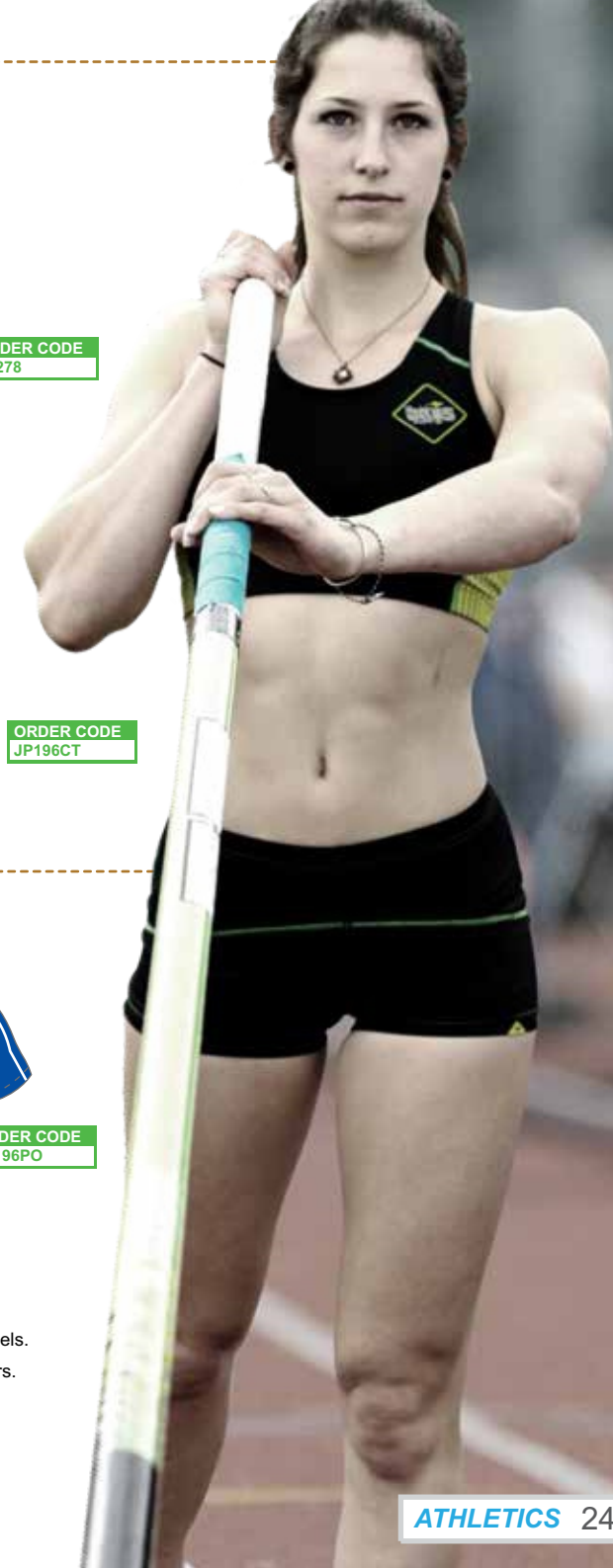
## POLO



ORDER CODE  
JP196PO

### FEATURES

1. Full sublimation with contrast cut and sew panels.
2. Sublimation colours to match your PMS colours.
3. Feature stitching details or contrast piping.
4. Full sublimation process on one fabric.
5. Branding with print or embroidery.





# CYCLING



## CYCLING - JACKET



ORDER CODE  
JP311Z

### FEATURES

1. Reflective trim.
2. Hidden zippers.
3. Back storage pockets.
4. Wind resistance front panel.

### INFORMATION

Made with high quality waterproof, windproof and breathable fabric our custom cycling vests and jackets are as functional as they are comfortable. Hidden zips ensure your custom design isn't obscured, and flatlocked stitched seams with Aero-max fabric panels allow breathability. Developed by cyclists for cyclists, our custom jackets and vests have everything you need for riding performance and comfort.

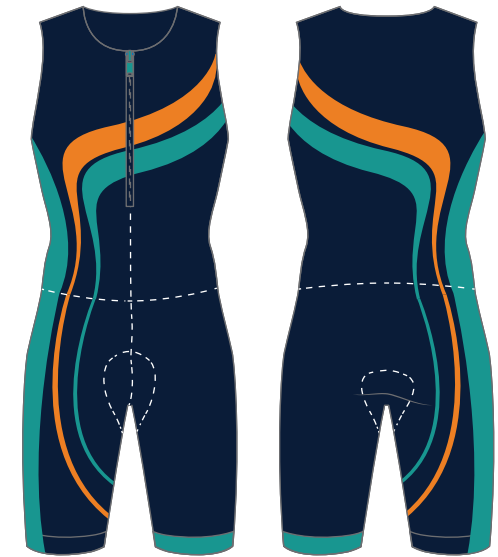
### INFORMATION

Have you noticed the pro riders wearing special Racesuits in time trials? We have, and now we make the same style skinsuit made from a special wind tunnel-tested performance Aero-max fabric developed in Korea, the AMX Speed Suit is a must for any serious time trial or track rider.

ORDER CODE  
JP0074

### FEATURES

1. Sub 4 drag.
2. Superb leg grippers.
3. Hidden zippers with ultra flex.
4. Unlimited number of colours.
5. 4-Way stretch Aero-max or European chamois – Male & Female fits available.



## CHAMOIS



144M micro long staple polyester filament yarn has been used to develop a fabric with enough padding for the bike while offering efficiencies for the swim and run. Using polyester yarns with Hydro-zone treatment fabrics enabling antibacterial protection and will minimize moisture retention through all three disciplines.

## SILICON LEG BANDS



## SPANKY

### FEATURES

1. Full sublimation or cut and sew panel construction.
2. Polyester Lycra or Nylon Lycra fabric.
3. Leg gripper silicon elastic bands.
4. Body mapped side panels.
5. Reflective trim.

ORDER CODE  
JP0075





## CYCLING - TOP



ORDER CODE

### INFORMATION

We have perfected the Aero-max race tops to make the most aerodynamic cycle top giving riders the best race performance. In conjunction with our performance fabrics and flatlock seams wind tunnel tests show that the cycle tops are 12 watts faster than previous styles produced in our factory.

## JERSEY



### FEATURES

1. Full-length or half-length cham-lock zippers
2. 3D fabric on back and sleeves.
3. Aero-max Dry fabric on front
4. Silicone gripper elastic
5. Reflective tabs

ORDER CODE  
JP311Y

## SUIT



ORDER CODE  
JP73Z

### FEATURES & INFO

SEE PAGE 26

## SHOE COVERS

### FEATURES

1. Keeps feet cool and dry.
2. Cleat and heal cut outs.
3. Breathable fabric.
4. Easy entry.
- 4.

ORDER CODE  
JP103

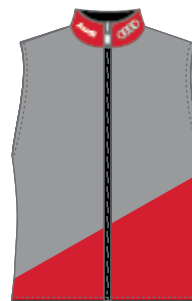


### INFORMATION

Cycling shoe race covers will keep your feet cool and comfortable whilst you cycle. Designed to reduce drag and keep road grit away from your clip-on gear.

## VEST

ORDER CODE  
JP0080



### FEATURES

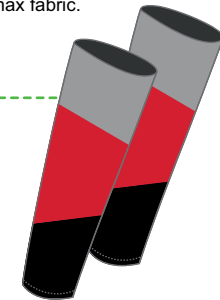
1. LED light hanger loop
2. Fits in your back pocket when not in use
3. Windstop shower resistant fabric front, mesh back.
4. Reflective piping and shoulder prints front and back.
5. Construction Aero-max polyester front panel with mesh back.

## ARM WARMERS

### FEATURES

1. Double-sided silicone grippers keep the warmers in place .
2. Made from Performance Aero-max fabric.
3. Made from breathable fabric.
4. Great in all conditions.

ORDER CODE  
JP0081



### INFORMATION

Crafted from intelligent Aero-max fabric, these arm warmers bear all the cooling properties of a Thermoflex fabric in dry conditions to ensure you remain fresh and ventilated, yet when it begins to rain the Aero-max fabric then transforms to show its excellent hydrophobic qualities repelling moisture.

**FEATURES & INFO**

SEE PAGE 26

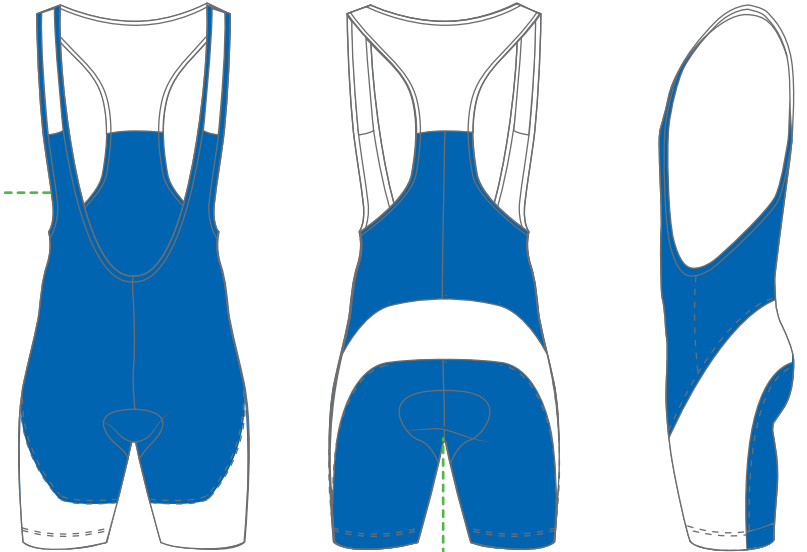
**ORDER CODE**  
JP073



**FEATURES**

1. Lycra material.
2. Elastic Interface.
3. Reflective detailing.
4. Mesh bib straps.
5. Silicone leg gripper.

**ORDER CODE**  
JP158BS



**INFORMATION**

This set of cycling bib shorts combine a flexible fit and breathable surface to craft a comfortable cycling accessory that help to drive performance.

The bib shorts are constructed using Lycra, which offers a fully flexible design allowing a wide range of movement when riding, granting an exceptionally comfortable fit that is supportive without being restrictive.

This design is further bolstered by the addition of 'Elastic Interface', a padding system integrated within the base of the bib shorts that grants an unequalled level of comfort. Together with silicon elastic leg cutting and moisture wicking fabrics this garment is really easy to justify.

**EXAMPLE REFLECTIVE BRANDING**



**TOP & JACKET**

**ORDER CODE**  
JP158TP

**FEATURES & INFO**

SEE PAGE 26

**ORDER CODE**  
JP158JK





# TOUCH



**INFORMATION**

Our Touch Uniforms are innovative and stylish, produced from performance polyester mesh. Breathable and soft-touch treated.

We can supply custom made touch tops and shorts from the same fabric or use poly / cotton drill for the shorts.



**FEATURES**

1. Logo and crest, sublimation or embroidery.
2. Fully sublimated playing jersey including numbers.
3. Collar options see page 40 for details.

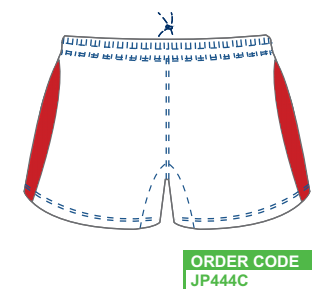
**EXAMPLE FABRIC SEAM**



**EXAMPLE FABRIC, SUBLIMATION & PIPING**



**SHORTS**



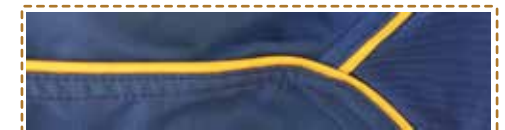
**FEATURES**

1. Main fabric is 100% polyester or poly / cotton twill.
2. Panels can be 1774 polyester mesh or heavy duty lycra.
3. All shorts have durable draw cords in the waist band.
4. Shorts can be full sublimation or cut and sew from stock colours.

**INFORMATION**

We have 4 standard rugby short styles each can be made with different fabric option, or mix two different fabric into one short.

**EXAMPLE FABRIC WITH PIPING**



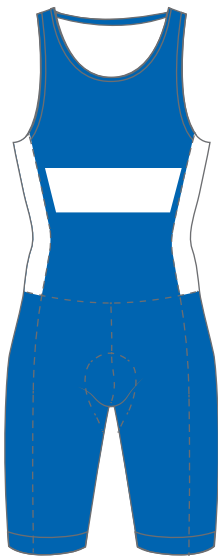


# ROWING

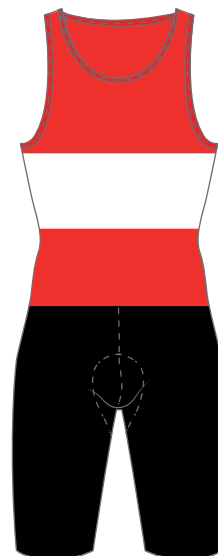




ORDER CODE  
JP319



ORDER CODE  
JP449



ORDER CODE  
JP0449X



ORDER CODE  
JP453

**FEATURES**

1. Flatlock stitching detail.
2. Leg elastic silicon tapes.
3. Double panel chest lining for ladies.
4. All our suits are produced from Aero-Max nylon spandex.
5. Full sublimation or cut and sew construction from solid dyed fabrics.

**INFORMATION**

Aero-max rowing suits are the preferred racing and training garment in the rowing community. All our suits are made to order, and unique to your team. Male and female suits have different needs. Our manufacturers address this by engineering the perfect cut for each. Our suits come standard with "tank cut" backs, however some styles can be made with "razer back".

**TRACK JACKET**



ORDER CODE  
JPHS225

**FEATURES**

1. Vented Back Panel.
2. Waterproof Aeromax Shell.
3. Lined with Lightweight Mesh.
4. Vented QuickDri Stretch Panels.
5. Reflective piping or transfer across Back Panel.

**HOODIE**



ORDER CODE  
JP0099

**TRACK JACKET**



ORDER CODE  
JP0098

**RUGGER**



ORDER CODE  
HS197

**INFORMATION**

A very popular garment for rowing crews and supporters, Rugby Knit cut and sew panel rugby jerseys in club colours with crew names, logos and sponsor. Produced in 290gsm poly/cotton knit fabric.



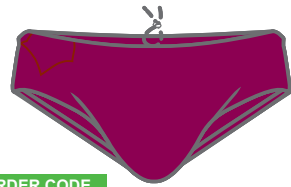


PAGE 33

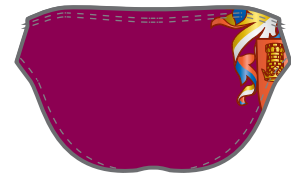
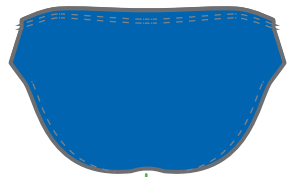
# SWIM & SURF



ORDER CODE  
JP459



ORDER CODE  
JP159



**FEATURES**

1. 74% Nylon / 26% Long Life lycra fiber.
2. Sublimation friendly fabric.
3. For training or racing.
4. Drawstring waist.
5. All over print.

**EXAMPLE FABRIC WITH EXAMPLE STITCH**

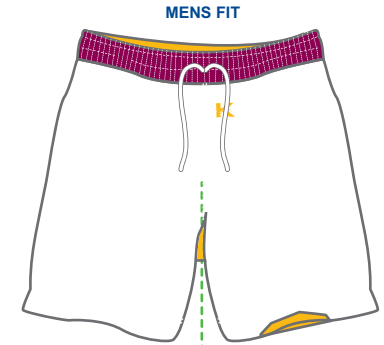


LADIES FIT

ORDER CODE  
JP0103

**INFORMATION**

Our board shorts in male and female styles deliver comfortable composition for a premium fit.



MENS FIT

ORDER CODE  
JP0104

**FEATURES**

1. Draw cord waist adjustment with rear pockets.
2. Full sublimation print friendly fabric.
3. Lace up front or velcro.
4. Super-max material.
5. 100% Polyester.

SUITS

**FEATURES**

1. Thick straps for comfort and support
2. High-cut legs for full range of motion
3. 100% fabric Suit with flatlock
4. Hydrodynamic design
5. Contrast stitching
6. Four way flat seams
7. Open back



ORDER CODE  
JP0118



ORDER CODE  
JP119



ORDER CODE  
JP0460



**INFORMATION**

These togs are fast; this popular design still delivers in the water with its hydrodynamic design and excellent fit.





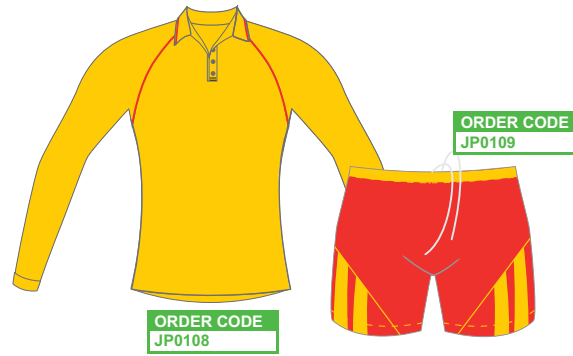
SURF RESCUE  
**DHL**

SURF RESCUE  
**DHL**

## JACKET & SHORT



ORDER CODE  
JP367



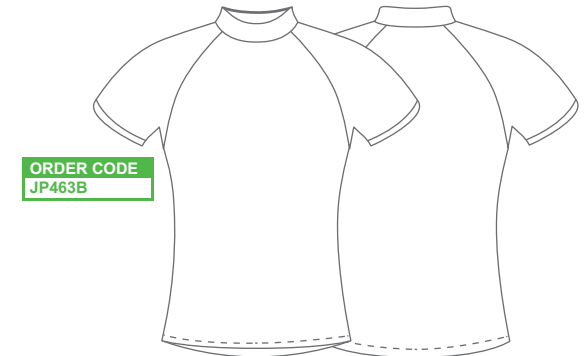
ORDER CODE  
JP0109

ORDER CODE  
JP0108

### INFORMATION

Surf shorts - Recycled supersuede polyester boardshort, in a regular fit, with zip-up side pocket, new short fly with gusset, and basic drawcord.

## SURF LIFESAVER - TOP



ORDER CODE  
JP463B

### INFORMATION

With an Ultra-Violet Protection rating of 50+ when dry and 30 when wet, the AeroMax rash top is the perfect protection from the sun when snorkelling, swimming or diving. It is fast drying and available in a range of colours.

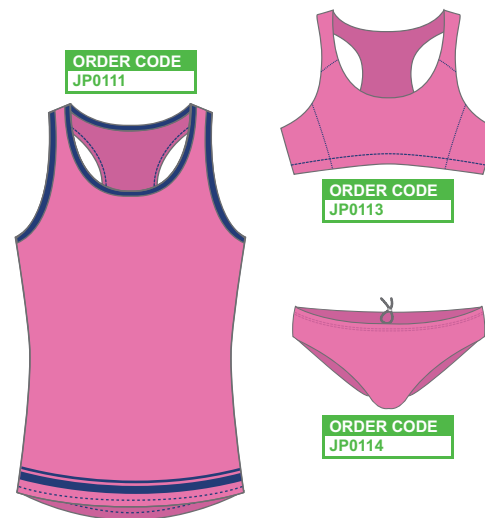
## SINGLET, CAP & TOGS



ORDER CODE  
JP0111

ORDER CODE  
JP0112

ORDER CODE  
JP0109



ORDER CODE  
JP0111

ORDER CODE  
JP0113

ORDER CODE  
JP0114



ORDER CODE  
JP0109



ORDER CODE  
JP0116



ORDER CODE  
JP0115

### FEATURES

1. Fully lined.
2. Printable on front.
3. 100% Chloroban Polyester.
4. Resists Chlorine damage.

### Competition Surf Caps

Made from Durable light weight AeroMax polyester panel flat-locked stitched or sublimated to suit club colours and design.



# CUSTOM BRANDING

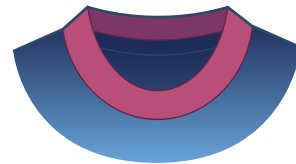


## FABRIC OPTIONS

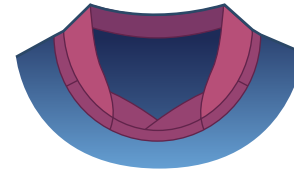


## COLLAR OPTIONS

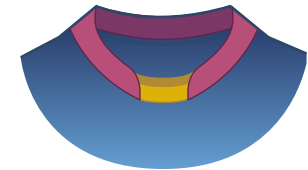
**CREW NECK**



**DOUBLE CROSS FRONT CREW**



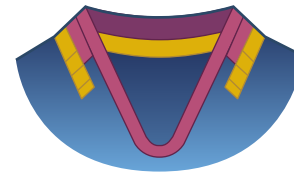
**TONGAN COLLAR**



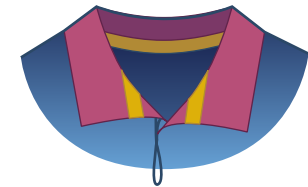
**TRADITIONAL V-NECK**



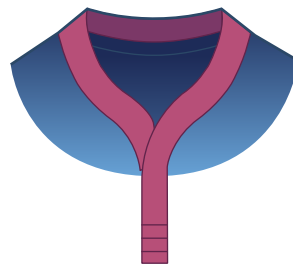
**JOBBERG COLLAR**



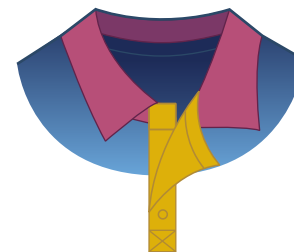
**TRADITIONAL LOOP COLLAR**



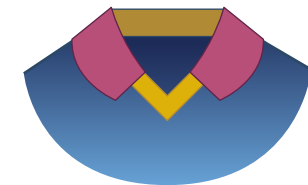
**WORLD CUP COLLAR**



**TRADITIONAL BOX COLLAR**



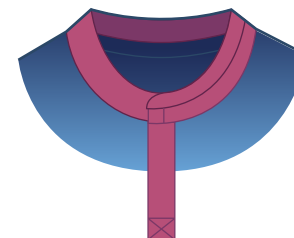
**V-NECK HALF COLLAR**



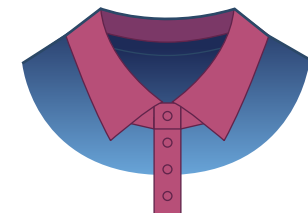
**INSERT V-NECK**



**FRENCH COLLAR**



**TRADITIONAL POLO COLLAR**



We have a selection of fit for purpose fabrics to choose from based on your requirements.

# ***UNIMAN SPORTS***



***Info@unimansports.com***



***www.unimansports.com***



***+92 313 7532015***



***Pasrur Bypass Road, Akbar  
Abad, Sialkot 51310 , Pakistan***